

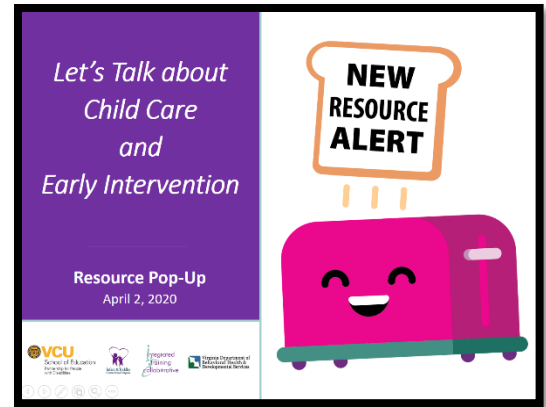


Child Care and Early Intervention Staff Development Resources and Plan



1. **Watch the video:** [Early Intervention & Child Care: Natural Partners in Natural Environments](#) (EI Training Program, University of IL, 10:50 min)

Start a conversation with your staff by watching this video together. This video speaks directly to child care providers with guidance that explains early intervention (EI), the EI process, and what EI in child care settings (home- and center-based) looks like. While information is provided that is specific to Illinois's EI system, other information is shared that represents best practices for all programs, including the link between supporting a child's development at home and at child care. Encourage your staff to share their experiences collaborating with child care providers, focusing on successes, challenges, and strategies that support partnerships in child care settings.



2. **Watch the archived webinar:** [Delivering EI Services in Child Care Settings - Part I](#) (1 hour)

Plan time to watch Part I of this 2-part webinar series together with your staff. Or, email them the link and ask them to watch it before you meet. In Part 1, the presenters explore some of the challenges of providing services in child care settings and discuss solutions. Reflect with your staff about their biggest challenges and how they overcome them. Encourage them to share ideas and strategies. If they identify needs, work together to address them (i.e., plan for how to strengthen relationships with child care centers, provide additional training, pair staff up to shadow each other on visits).

3. **Read and discuss the article:** [Checklists for Providing/Receiving Early Intervention Supports in Child Care Settings](#) (Rush & Shelden, 2012)

Ask your staff to read the article and complete the *Checklist for Providing Early Intervention Supports in Child Care Settings*. Encourage them to reflect on their practices by sharing what they already do well and where they need to grow based on the checklist. Discuss what an inclusive child care setting looks like and how to support inclusive practices. Have each staff person identify an action plan that describes what he/she will do to strengthen collaborations with child care providers. Plan to check in on the action plans at the next meeting.

4. **Watch the archived webinar:** [Delivering EI Services in Child Care Settings: Let's Get Real – Part II](#) (1 hour)

After watching Part I and reflecting with the article and checklist, deepen your discussion by watching Part II together (or sending the link before your meeting). In this part, EI service providers join the discussion to address specific, real-world challenges with providing EI in child care centers and share their strategies for overcoming those challenges. After watching the webinar, reflect with your staff about strategies they heard that they want to try.

5. **Discuss and share:** [Child Care and Early Intervention Information Package](#)

To give your staff something concrete they can use when collaborating with child care providers, introduce (or review) the information package, which includes a [letter to the Director](#), [an infographic about the child care provider's role in EI](#), [a handout about what to expect during a visit](#), [a child care provider information gathering form](#), [an EI visit summary form](#), [a communication log](#), and [a resource list](#). Review each component and brainstorm with your staff about how they can use the package with child care providers in your community. Plan for how your program can use the package for community outreach and/or when EI service providers work one-on-one with child care providers.